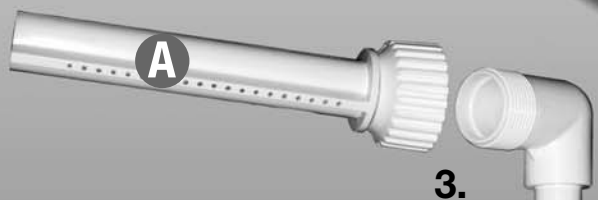
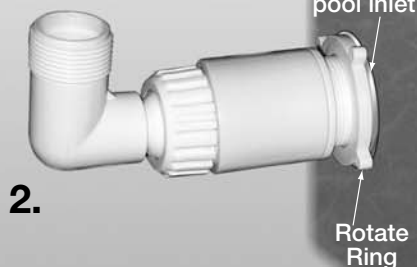
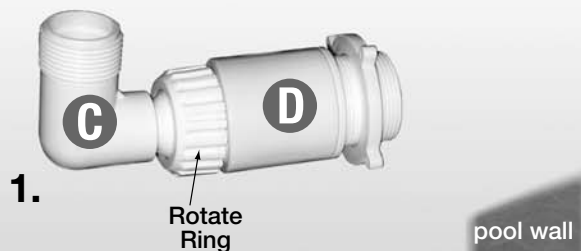
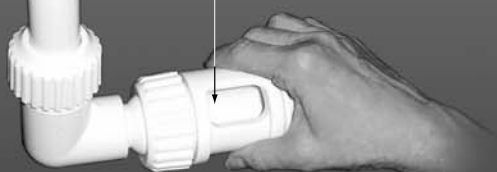


POOL & SPA WATERFALL FOUNTAIN NO. 54507 ASSEMBLY INSTRUCTIONS



Height of waterfall can be adjusted by turning sleeve on Part D to make opening larger or smaller.
Note: the smaller the opening, the higher the waterfall.

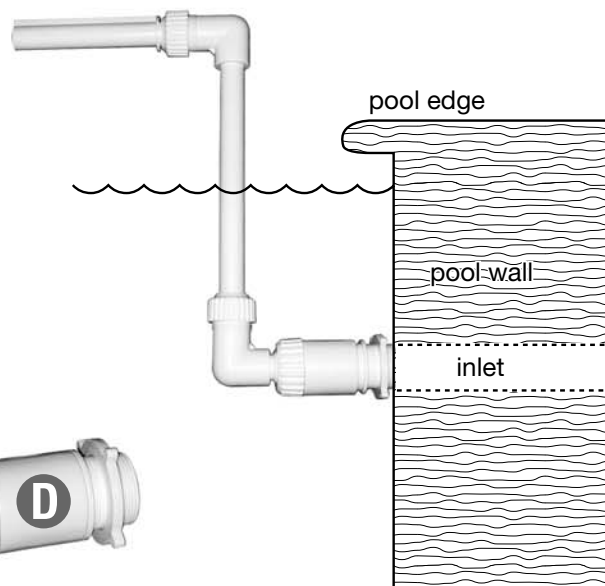


Parts List

- A. 1 Spray Head
- B. 1 Riser
- C. 1 Elbow Connector
- D. 1 Inlet Connector

Assembly

1. Attach Elbow Connector (C) to Inlet Connector (D). Rotate ring until tight.
2. With parts C and D connected, attach this assembly to pool inlet by rotating until threads fully engage. Rotate ring until it makes contact with pool wall and then tighten for a firm connection.
3. Attach Spray Head (A) to Riser (B).
4. With parts A and B connected, attach this assembly to previously connected parts (C and D).



NEED ASSISTANCE?

Call our Consumer Service Line

800-854-1492

See our web page @ <http://www.poolmaster.net>
e-mail address: customerservice@poolmaster.net